

MapInfo Plotting to Scale made Simple and Quick with Plots4MI

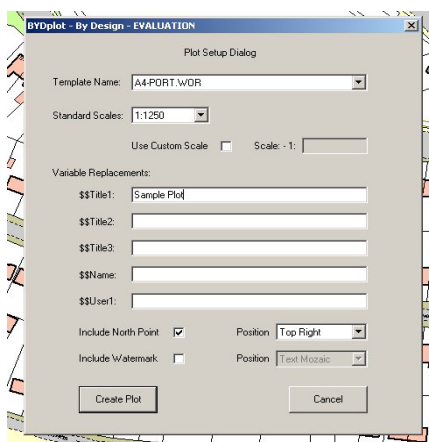
Creating standard corporate style maps from Native MapInfo can be time consuming and open to mistakes in presentation or scales. **Plots4MI** is a MapBasic program that sits as an additional menu item so that the user is able to utilise the full power of MapInfo and when a plot is needed – just choose the plot option and pick the map template required. Templates are easily created and saved as a workspace file and may include variable replacement text items which may be automatically updated as the plot is created. All standard items of text such as Organisation Name, Address, Copyright Text or any other text or Logo required may be held in the Workspace Template. Date and Scale may be automatically inserted into the plot template by the program.

Plots4MI Features

- Uses standard workspace files as templates. Any number of templates may be created.
- Layout Templates may include Authority/Company Logos, watermarks or any text/object as required.
- Automatically inserts map window into frame at selected scale.
- Allows variable replacement text such as titles, project etc.
- Add North Point or Watermark Text if required. (These may also be included on template if required.)
- Automatically inserts date / scale without user input.
- Many standard plotting templates included with the package – any of which may be modified to suit user requirements.
- Amend scale of plot at any time prior to plotting – scale text automatically refreshed.
- Add grid lines with text if required.
- Add Scale Bar automatically to Layout if required and amend units and colour.
- Multiple frames on layout with Frame Management option to allow for insert maps and centre inserts on main position if needed.
- Includes special options to produce 'standard' OS 0.5km x 0.5km, 1km x 1km, 2km x 1km or 2km x 2km plots at standard scales (e.g. 1/1250 or 1/2500 etc) by just entering sheet number such as SN1234 or SN1234SW.
- Automatically create standard OS grids (at various scales using OS grid sizes as above) over your area and select any of the grids for plotting which may then be manually or automatically sent for plotting.
- On-Line Help facility.
- Can be used with a MapInfo RunTime license. Separate RunTime version available – included free with Site License.
- Available as a Single User License at £95 or as a 10-User pack at £495 or unlimited Site License at £995



Easy to Use Interface



Simple control dialog box allows the user to control plot parameters including scale and variable text items. Other menu items allow the user to amend plot scale, add or remove grid lines and associated text.

Option also available to create OS 'standard' sized plots (e.g. 1km x 1km or 2km x 1km etc.) at standard 1:1250 or 1:2500 scales by just entering a sheet number.

New Mosaic plot option allows the user to create standard OS grids over the map extents, select any of these grids using any of MapInfo's selection options and then batch plot selected grids automatically.

To try **Plots4MI** go to our website (www.redmapper.co.uk) and download an evaluation version. - No password required.